

.....
BROADWAY AT THE
TENNESSEE
THEATRE
.....

PRESENTED BY
GREATER
KNOXVILLE
Honda Dealers



BEE TLE JUICE

The Musical. The Musical. The Musical.



LOVE YOUR DOWNTOWN

100+ Restaurants
Shopping | Galleries | Markets
Year-Round Events
Urban Living



DowntownKnoxville.org

**DOWN
TOWN
KNOXVILLE**





WELCOME ...

... to the historic Tennessee Theatre, the Official State Theatre of Tennessee! We are proud to present the 2023-24 season of Broadway at the Tennessee, presented by Greater Knoxville Honda Dealers, with additional support from Visit Knoxville, Stowers Machinery Corporation, Rather & Kittrell Capital Management, and Thermal Label Warehouse.

Broadway has become a hot ticket in Knoxville! This season we sold over 75% of all available inventory to our subscribers before we started selling tickets to individual shows. Whether you are a new subscriber this season or last, or you've been a loyal Broadway patron since our inaugural 2008-09 season, all of you provide a solid foundation with an investment in subscription tickets. A strong subscriber base helps attract larger shows sooner to our Knoxville market. The Theatre staff is constantly working to better serve our growing number of returning ticketholders while welcoming new patrons experiencing Broadway for the first time. We are grateful for every single patron!

One of our favorite things is to share the magic of the Tennessee Theatre with young people. Through our Theatre Arts for All program, the Theatre provides free Broadway show tickets to schoolchildren, as well as offering free workshops, lectures, and masterclasses led by touring professionals throughout the season. We were thrilled to have added a 9th performance of *TO KILL A MOCKINGBIRD*, a matinee show especially for students. We hope to offer additional matinee, student-only performances in future seasons. Be sure your child's teachers receive our education newsletter at tennesseetheatre.com/education to be informed about future opportunities.

As we wind down the memorable and record-breaking 2023-2024 season with *BEETLEJUICE* this week, we are already preparing for another fabulous season of Broadway at the Tennessee. Current subscribers have renewed their season tickets, and in just a few days, we'll begin selling subscriptions to new patrons. If you've been meaning to join in on the fun, be sure to visit tennesseetheatre.com/broadway or call 865-684-1200 x2 on Monday, June 24, at 10am sharp!

Now, as the lights dim and all eyes are drawn toward the stage, we thank you once again for believing in our dream of Broadway at the Tennessee. Enjoy the show!

Sincerely,



Becky Hancock
Executive Director



SPONSORS

WE RECOGNIZE WITH GRATITUDE THE GENEROUS SUPPORT OF OUR BROADWAY PARTNERS:

GREATER
KNOXVILLE
Honda Dealers

VISIT
KNOXVILLE
TENNESSEE

PRESENTING SPONSOR



SPOTLIGHT CLUB SPONSOR



OPENING NIGHT SPONSOR

SUPPORTING SPONSOR



PRINTED PROGRAM SPONSOR



Preshow Dinner & Drinks

Steps away from Tennessee Theatre!
~ Open all day ~
Brunch until 5p & Dinner after 4p
Full Bar • Outdoor Dining
Wine Down Wednesday



All Day Cafe • Mon-Sat 7a - 9p & Sun 7a - 4p
417 South Gay Street Knoxville, TN / frothymonkey.com



CIRRUS
LEARN TO FLY
WITH THE EXPERTS

Now serving Knoxville from the Vision Center campus.

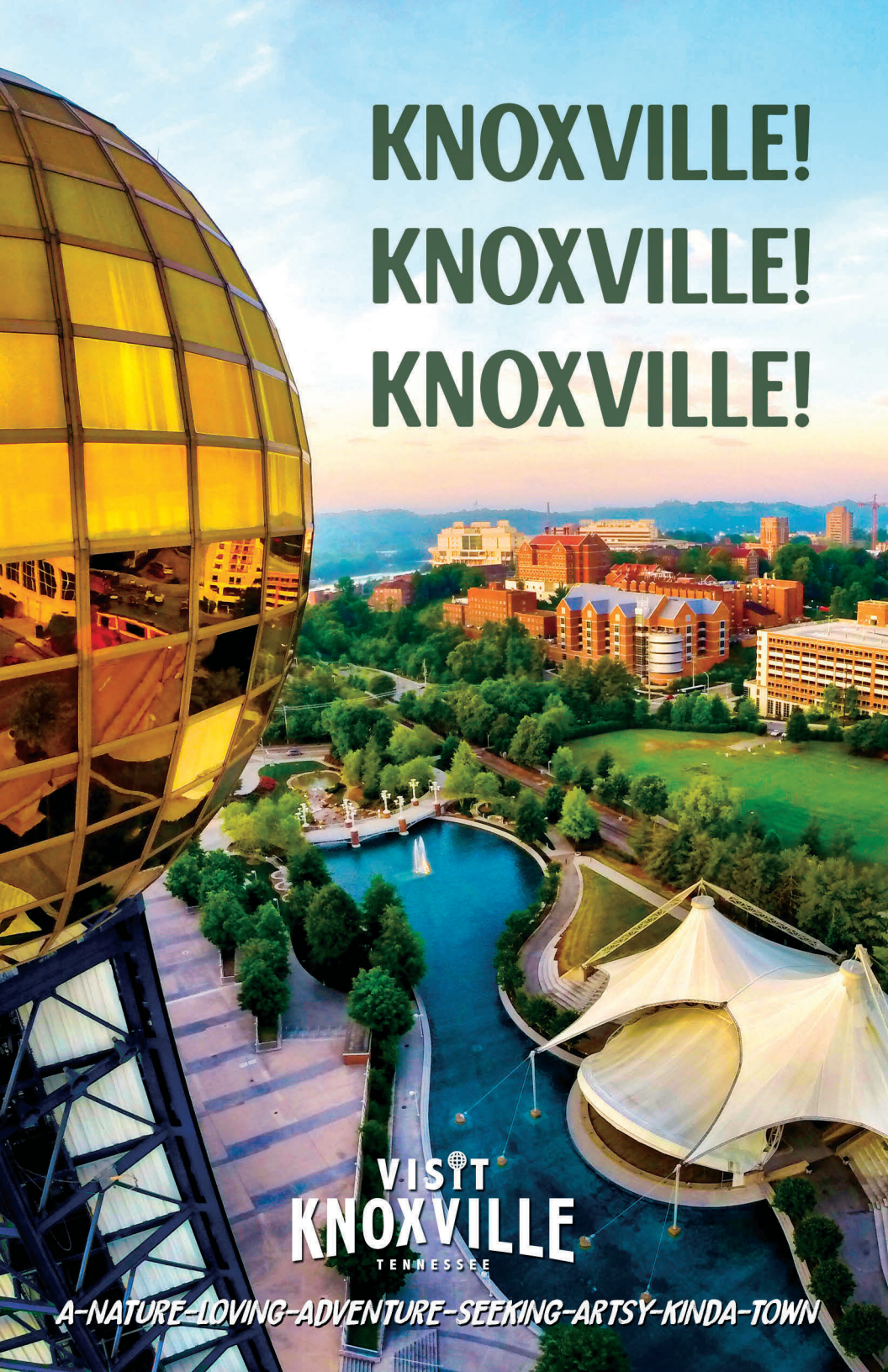


Cirrus Flight Training courses designed to fit your schedule so you can fly on your time.

Discover more at cirrus.link/learn-to-fly



©2022, CIRRUS DESIGN CORPORATION. ALL RIGHTS RESERVED.

An aerial photograph of Knoxville, Tennessee, taken from a high vantage point. On the left, the large, golden, spherical Sunsphere structure is prominent, reflecting the surrounding city and sky. Below it, a paved walkway leads to a river with a small fountain. In the center, a large green field is visible, surrounded by trees and buildings. The background shows a cityscape with various buildings and a hazy horizon under a blue sky with light clouds.

KNOXVILLE!
KNOXVILLE!
KNOXVILLE!

VISIT
KNOXVILLE
TENNESSEE

A-NATURE-LOVING-ADVENTURE-SEEKING-ARTSY-KINDA-TOWN



Hickory

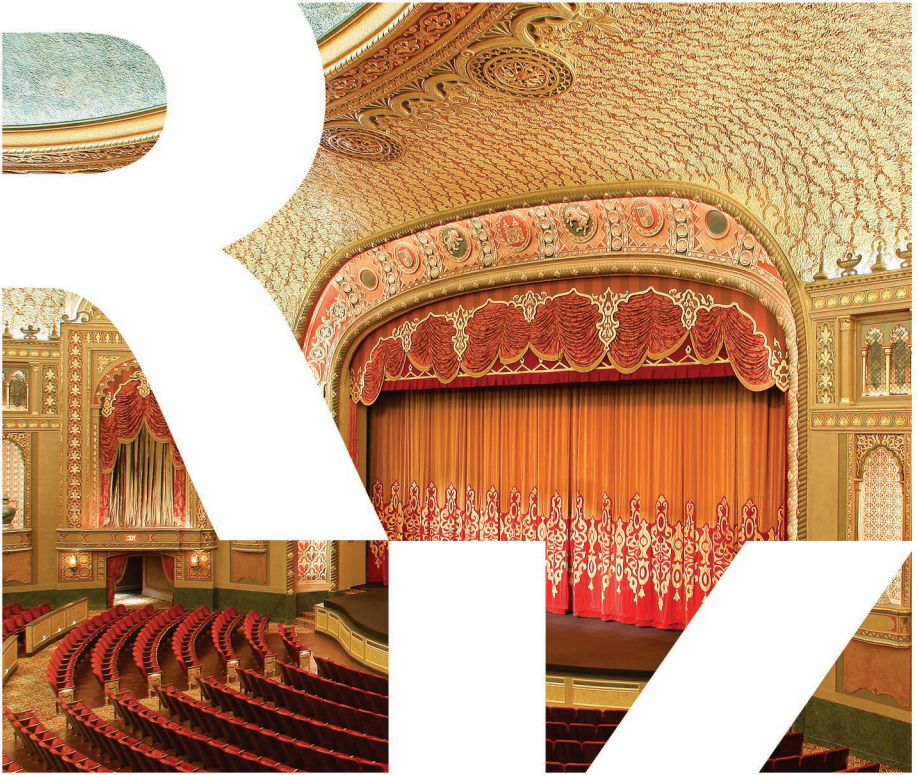
Construction, Inc.

Contact Us

(865) 983-7856

hickoryconstruction.com





IT'S SHOWTIME!

Supporting philanthropic causes is an important part of financial planning for many families that we work with at Rather and Kittrell. It's also a core value for us, which is why we have been partnering with the Tennessee Theatre to support the arts in Knoxville for more than two decades. As you settle in to enjoy *Beetlejuice*, know that your support helps continue this tradition of artistic excellence. We hope you enjoy the show!

To learn more about how we help Knoxville families live well, call **(865) 218-8400** or visit **RKcapital.com**.

2023+
2024

**BROADWAY SERIES
OPENING NIGHT SPONSOR**

THE SCOUT GUIDE KNOXVILLE



HOW TO LIVE *LOCALLY*

VISIT

featured local businesses, venues, and institutions
in person and online.

FOLLOW

The Scout Guide and Scouted Businesses on social media.

SHARE

your local experiences - and The Scout Guide - with family,
friends, and your community.

  @TSGKNOXVILLE

WWW.THESCOUTGUIDE.COM/KNOXVILLE



WE'RE
SETTING
THE STAGE
FOR PROGRESS!

The Tennessee Theatre is expanding into spaces located in the historic 612 Building on Gay Street, which will physically connect the two structures and provide access to much needed amenities such as additional restrooms and concessions; improved space for education, community outreach, rehearsals, and events; and administrative offices.

TENNESSEE
THEATRE
SINCE 1928

LEARN MORE AT
tennesseetheatre.com/612

WARNER BROS. THEATRE VENTURES NETWORKS PRESENTATIONS
LANGLEY PARK PRODUCTIONS JEFFREY RICHARDS STEVE TRAXLER
REBECCA GOLD JAMES L. NEDERLANDER WARNER/CHAPPELL MUSIC INC.
in association with
deROY FEDERMAN PRODUCTIONS/42ND.CLUB MARY LU ROFFE MARC BELL & JEFF HOLLANDER
THE JOHN GORE ORGANIZATION RUTH & STEVE HENDEL
GABRIELLE PALITZ PIERCE FRIEDMAN PRODUCTIONS
present

BEETLEJUICE

Music & Lyrics By **EDDIE PERFECT** Book By **SCOTT BROWN & ANTHONY KING**

Based on the GEFGEN COMPANY PICTURE, with a story by MICHAEL MCDOWELL & LARRY WILSON

JUSTIN COLLETTE ISABELLA ESLER
MEGAN MCGINNIS WILL BURTON JESSE SHARP SARAH LITZINGER

ABE GOLDFARB MADISON MOSLEY MARIA SYLVIA NORRIS HILLARY PORTER BRIAN VAUGHN
MICHAEL BIREN RYAN BRESLIN JONATHAN BRYANT HALEY FISH HALEY HANNAH MORGAN HARRISON
MATTHEW MICHAEL JANISSE ERIC ANTHONY JOHNSON KENWAY HON WAI K. KUA SEAN McMANUS
MATEO MELENDEZ LEE N PRICE LARKIN REILLY LEXIE DORSETT SHARP CORBEN WILLIAMS

Scenic Design
DAVID KORINS

Costume Design
WILLIAM IVEY LONG

Lighting Design
KENNETH POSNER

Sound Design
PETER HYLENSKI

Projection Design
PETER NIGRINI

Puppet Design
MICHAEL CURRY

Special Effects Design
JEREMY CHERNICK

Magic & Illusion Design
MICHAEL WEBER

Hair & Wig Design
CHARLES G. LoPOINTE

Make-Up Design
JOE DULUDE II

Additional Arrangements
EDDIE PERFECT
KRIS KUKUL

Dance Arrangements
DAVID DABBON

Music Producer
MATT STINE

Music Director/Conductor
ANDY GROBENGIESER

Music Coordinator
KRISTY NORTER

Physical Movement Coordinator
LORENZO PISONI

Associate Director
CATIE DAVIS

Associate Choreographer
MICHAEL FATICA

Production Stage Manager
ALAN D. KNIGHT

Company Manager
JOEL T. HERBST

Tour Marketing & Press
ALLIED GLOBAL MARKETING

Digital & Social Media
SPOTCO

Casting
THE TELSEY OFFICE
RACHEL HOFFMAN, CSA
RASHAD NAYLOR

Exclusive Tour Direction
THE ROAD COMPANY

General Management
GENTRY & ASSOCIATES
GREGORY VANDER PLOEG

Line Producer
JENNY GERSTEN

Production Management
NETWORKS PRESENTATIONS
WALKER WHITE

Executive Producers
WARNER BROS. THEATRE VENTURES
MARK KAUFMAN & KEVIN McCORMICK

Executive Producers
NETWORKS PRESENTATIONS
MIMI INTAGLIATA

Musical Supervision, Orchestration & Incidental Music
KRIS KUKUL

Choreographed By
CONNOR GALLAGHER

Directed By
ALEX TIMBERS

CAST

Beetlejuice	JUSTIN COLLETTE
Lydia	ISABELLA ESLER
Barbara	MEGAN MCGINNIS
Adam	WILL BURTON
Charles	JESSE SHARP
Delia	SARAH LITZSINGER
Priest	ABE GOLDFARB
Movers	ABE GOLDFARB, LEE N PRICE
Maxine Dean	MARIA SYLVIA NORRIS
Maxie Dean	BRIAN VAUGHN
Otho	ABE GOLDFARB
Girl Scout	MADISON MOSLEY
Miss Argentina	HILLARY PORTER
Census Taker	ABE GOLDFARB
Neighbors	LEE N PRICE, MARIA SYLVIA NORRIS, BRIAN VAUGHN
Juno	MARIA SYLVIA NORRIS
Ensemble	MICHAEL BIREN, JONATHAN BRYANT, HALEY FISH, ABE GOLDFARB, KENWAY HON WAI K. KUA, MATEO MELENDEZ, MADISON MOSLEY, MARIA SYLVIA NORRIS, HILLARY PORTER, LEE N PRICE, LARKIN REILLY, BRIAN VAUGHN, CORBEN WILLIAMS

UNDERSTUDIES

Understudies never substitute for the listed performers unless a specific announcement is made at the time of the appearance.

For Beetlejuice—MICHAEL BIREN, MATTHEW MICHAEL JANISSE, LEE N PRICE;
for Lydia—MADISON MOSLEY, LARKIN REILLY;

for Barbara—HALEY FISH, HALEY HANNAH, LEXIE DORSETT SHARP;

for Adam—RYAN BRESLIN, ABE GOLDFARB, MATTHEW MICHAEL JANISSE;

for Delia—HALEY FISH, MARIA SYLVIA NORRIS, LEXIE DORSETT SHARP;

for Charles—ABE GOLDFARB, MATTHEW MICHAEL JANISSE, BRIAN VAUGHN;

for Otho—MICHAEL BIREN, RYAN BRESLIN, MATTHEW MICHAEL JANISSE, LEE N PRICE;

for Maxie Dean—MICHAEL BIREN, RYAN BRESLIN, ABE GOLDFARB, MATTHEW MICHAEL JANISSE;

for Maxine Dean—HALEY HANNAH, LEXIE DORSETT SHARP;

for Juno—HALEY HANNAH, LEXIE DORSETT SHARP;

for Girl Scout—HALEY HANNAH, LARKIN REILLY;

for Miss Argentina—HALEY FISH, LEXIE DORSETT SHARP, LARKIN REILLY.

DANCE CAPTAIN: RYAN BRESLIN

ASSISTANT DANCE CAPTAIN: HALEY HANNAH

SWINGS

RYAN BRESLIN, HALEY HANNAH,

MATTHEW MICHAEL JANISSE, LEXIE DORSETT SHARP

VACATION SWINGS

MORGAN HARRISON, ERIC ANTHONY JOHNSON, SEAN McMANUS

THERE WILL BE ONE 15-MINUTE INTERMISSION.

TO VIEW THE CAST LIST FOR THIS PERFORMANCE, SCAN THE QR CODE BELOW:



Music Producer—MATT STINE
Music Supervisor—KRIS KUKUL
Music Director/Conductor, Keyboard—ANDY GROBENGIESER
Assistant Conductor/Keyboard—JULIA SUNAY
Reeds—CLAYTON WILLIAMS; Trumpet—ROB SLOWIK; Trombone—JIM LUTZ; Bass—MARK
ZIEGLER; Guitars—STEPHEN FLAKUS, MIKE FREDERICK;
Drums—TOM JORGENSEN; Violin—MICHALIS KOUTSOUPIDES.
Keyboard and Synthesizer Programmer: Midiomatic, LLC/Taylor Williams
Music Copying: Emily Grishman Music Preparation
Music Coordinator: Kristy Norter

We want to thank Tim Burton for his imagination, which has inspired us all throughout our many years working on this show. We are grateful that he cleared a path for us to play in the extraordinary world of his creation.

—With much love and appreciation,
the Cast and Creative Team of Beetlejuice

WHO'S WHO IN THE CAST



Justin
Collette



Isabella
Esler



Megan
McGinnis




Will
Burton



Jesse
Sharp



Sarah
Litzsinger

 The use of any recording device, either audio or video, and the taking of photographs, either with or without flash, is strictly prohibited.

WHO'S WHO IN THE CAST



Abe
Goldfarb



Madison
Mosley



Maria Sylvia
Norris



Hillary
Porter



Brian
Vaughn



Michael
Biren



Ryan
Breslin



Jonathan
Bryant



Haley
Fish



Haley
Hannah



Morgan
Harrison



Matthew Michael
Janisse



Eric Anthony
Johnson



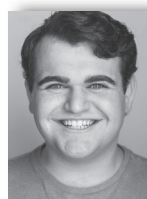
Kenway Hon Wai K.
Kua



Sean
McManus



Mateo
Melendez



Lee N
Price



Larkin
Reilly



Lexie Dorset
Sharp



CorBen
Williams

WHO'S WHO IN THE CAST

JUSTIN COLLETTE (*Beetlejuice*) is an award-winning actor, writer and musician. Broadway: *School of Rock* (Dewey Finn). Regional: *Rock of Ages* (Lonny). Netflix: *Cupcake and Dino: General Services* (Cupcake, NYT Best New Shows 2018). He's spent years performing sketch/improv at major comedy festivals and has written/voiced several cartoon shorts for *Bite on Mondo*, racking up millions of views on YouTube. He's very happy you're here and hopes you leave feeling a little more seen and a little less alone. @sorryitsjustin

ISABELLA ESLER (*Lydia*) is incredibly excited to be making her professional debut! She recently graduated high school in San Jose, CA and grew up in the Bay Area. Many thanks to Telsey Office, the *Beetlejuice* team, family, and friends. Extra love to mom and dad! @Isabella.esler

MEGAN MCGINNIS (*Barbara*). Broadway: *Side Show* (revival), *Les Misérables* (revival, Eponine), *Little Women* (Beth), *Beauty and the Beast* (Belle), *Thoroughly Modern Millie*, *Parade*, *The Diary of Anne Frank*. National Tours: *Come From Away*. Off-Broadway and London: *Daddy Long Legs* (available on Broadway HD). TV/Film: "Marvelous Mrs. Maisel," "Younger," A Goofy Movie, and more. Recordings: Sutton Foster's *Wish* ("Flight") and *Take Me to the World*. Graduate Columbia University, faculty at Ball State University. Most proud of my son, Beckett.

WILL BURTON (*Adam*) is thrilled to be here in.... your town with this incredible company! Broadway: *Hello, Dolly!* (Ambrose); *Kiss Me, Kate!* (Gremio); *Holiday Inn*; *An American in Paris*. Off-Broadway: *Between the Lines* (Frump/Ryan). Other: *Young Frankenstein* (Igor), *Ogunquit*; *Last Days of Summer* (Stuke), *George Street*; *Holiday Inn* (Ted), The Marriott Lincolnshire; *The Music Man* (Tommy), Arena Stage; *An American in Paris*, Théâtre du Châtelet. TV: "The Blacklist." Thanks to Mama, Daddy, Callen, Haley, all of my teachers, and my incredible reps at KMR! @willburtonum

JESSE SHARP (*Charles*). Tour: *The Addams Family* (Gomez), *Elf* (Walter), *Grease* (Vince Fontaine). Regional: Goodspeed Operahouse, Utah Shakespeare Festival, North-shore Music Theatre, Engeman, Cape Playhouse, The Rev, Theatre by the Sea, The Little Theatre on the Square, Denver's Lone Tree Arts Center, Human Race Theatre, Antaeus. Film/TV: "The Marvelous Mrs. Maisel," "Gilded Age," "Blacklist," "Blue Bloods," "Almost Family," City on a Hill," "General Hospital," & "Mobland". Training: MFA-UC Irvine, BA-UCLA. Love & endless gratitude to my Lexie & our buddy Chip. @mrjessesharp

SARAH LITZINGER (*Delia*). Broadway: *Beauty and The Beast* (Belle), *Oliver!* with Patti Lupone (Bet), *Amour* (Madeleine), *Les Misérables*, *Marilyn: An American Fable*.

National Tours: *Evita* (Eva Peron), *Joseph and the Amazing Technicolor Dreamcoat* with Donny Osmond (The Narrator). Favorite roles: *Little Shop* (Audrey), Broadway at Music Circus; *Next to Normal* (Diana), *Assassins* (Squeaky), Milwaukee Rep; *South Pacific* (Nellie), DTC; *Tick, Tick... Boom!* (Susan), George St. Playhouse; *Peter Pan* (Peter), Alabama Shakespeare Fest.

ABE GOLDFARB (*Otho*, *Ensemble*, *u/s Adam*, *u/s Charles*, *u/s Maxie Dean*) is an actor, writer and director based in Brooklyn, NY. He's been on Broadway (in *Beetlejuice*), he's voiced Pokémon (several), and he's exceeded burlesque shows all over the world (seriously). Deepest love to Mom and Rosebud.

MADISON MOSLEY (*Girl Scout*, *Ensemble*, *u/s Lydia*) is ecstatic to be making her national tour debut! CCM MT '24. Sending love and gratitude to her family, friends, and J <3 IG: @maddiemosley

MARIA SYLVIA NORRIS (*Maxine Dean*, *Juno*, *u/s Delia*) is dying of excitement to be part of the *Beetlejuice* family!! Favorite credits: *Sister Act* Intl Tour (Mary Patrick), *Madagascar* Natl Tour (Gloria), Disney Cruise Line (Rafiki), *Little Shop* (Chiffon - NSMT), *Tarzan* (Kala), *RENT* (Joanne), *Hairspray* (Motormouth Maybelle). BFA Drama NYU Tisch. Endless gratitude to Brian at HKA, Telsey+Co, Catie and the entire *Beetlejuice* team. @marianorris

HILLARY PORTER (*Miss Argentina*, *Ensemble*). Proud to represent her Latina heritage in the Netherworld! Broadway: *A Bronx Tale*. National Tours: *Aladdin*; *Pretty Woman*; *Hello, Dolly!*; *Elf*; *CATS*. NYC: *Thoroughly Modern Millie* Reunion Concert, *Bliss*. Regional: *Once* (Girl, Pioneer Theatre), *A Chorus Line* (Diana Morales, Cape Playhouse), *Jerome Robbins' Broadway* (Rosalia, The Munny). HillaryPorter.com, @HillaryPorter_

BRIAN VAUGHN (*Maxie Dean*, *Ensemble*, *u/s Charles*). Regional: Denver Center, Chicago Shakespeare, Milwaukee Rep, Utah Shakespeare (*Hamlet*, *Iago*, *Cyrano*, *Harold Hill*, *Javert*), South Coast Rep *She Loves Me* (Georg), Arizona Theatre Company, PCPA, Northlight. Thanks @Hudson Artists. Love to Addie, Scarlett, and Emma. brianvaughnofficial.com, @brianvaughn11

MICHAEL BIREN (*Ensemble*, *u/s Beetlejuice*, *u/s Otho*, *u/s Maxie Dean*) is thrilled to be on tour with *Beetlejuice!* New York: *Crazy for You* (Lincoln Center), *Revolution in the Elbow* (Minetta Lane). Tours: *My Fair Lady*, *Billy Elliot*, *Cinderella* (with Lea Salonga). Regional: Papermill, Goodspeed, Fulton, MSMT, MUNY, Riverside, Ogunquit. Love to DMRSCSF+B.

RYAN BRESLIN (*Swing*, *Dance Captain*, *u/s Adam*, *u/s Otho*, *u/s Maxie Dean*). Broadway: *Newsies* OBC (Racetrack), *Beetlejuice* OBC, *Charlie and the Chocolate Factory* OBC, *The*

WHO'S WHO IN THE COMPANY

Book of Mormon. TV/Film: "Person of Interest" (CBS), *Hail, Caesar!* (Feature Film).

JONATHAN BRYANT (*Ensemble*) is thrilled to join the cast of *Beetlejuice*. Select credits include: *West Side Story* (Muny), *Kinky Boots* (Fulton & MSMT), *42nd Street* (Bucks County), and *Newsies* (Red Mountain). Jonathan would like to thank his friends, family, and CESD for their love and support! @jonathanabryant

HALEY FISH (*Ensemble, u/s Barbara, u/s Delia, u/s Miss Argentina*). Broadway: *CATS* (Rumpelteazer); *Hello, Dolly!*; *Kiss Me, Kate*; *The Music Man*; *New York, New York*. Off Broadway: *Only Gold, Mack & Mabel*. TV: "Fosse/Verdon" on FX. Regional: *Chicago* (Velma Kelly), *The Lex*. BFA NYU '17. @oh_hayfish

HALEY HANNAH (*Swing, Assistant Dance Captain, u/s Barbara, u/s Maxine Dean, u/s Juno, u/s Girl Scout*) (she/her). Broadway: *Bring It On OBC* (u/s Campbell/Eva). National Tours: *A Bronx Tale* (ADC, u/s Rosina), *Summer: The Donna Summer Musical* (Swing), *Flashdance* (u/s Alex). TV: back-up singer Demi Lovato/Jonas Brothers (ABC). BFA University of Michigan. @haleyhannah25, www.haleyhannah.com. Love to Joey!

MORGAN HARRISON (*Vacation Swing*) is thrilled to be haunting audiences with *Beetlejuice*! SUCKSYES! Broadway: *Beetlejuice*, *Mean Girls*. National Tour: *Mean Girls*, *Flashdance: The Musical*. TV: "The Marvelous Mrs. Maisel." Grateful to God, Mama, Gram, HKA, Captain, and the whole team at BJ! Proverbs 3:5-6 @momoinnyc

MATTHEW MICHAEL JANISSE (*Swing, u/s Beetlejuice, u/s Adam, u/s Charles, u/s Otho, u/s Maxie Dean*) is Thrilled Thrilled Thrilled to be a part of this ghoulish company. Off Broadway: *Kinky Boots*. National Tour: *Something Rotten!*, *Cabaret*, *Mamma Mia!* Regional Theatre: Fulton, VSC, Arsht Center. Thanks to Nicole, Catie, Avalon, DDO, my family, and Carolyn! @matthewnofilter

ERICANTHONY JOHNSON (*Vacation Swing*). Broadway/National Tours: *Beetlejuice* (OBC), *R+H Cinderella*, *Evita*, *Elf*, *West Side Story*, *Miss Saigon*. Regional Includes: American Repertory Theater, The Kennedy Center, Sacramento Music Circus, Kansas City Starlight, Lone Tree Arts Center. TV/Film: *Spinning Gold*, "The Gilded Age," "Last Week Tonight." @ericanthonyjohnson

KENWAY HON WAI K. KUA (*Ensemble*). Broadway: *Wicked*, *The Frogs* (OBC). National Tour: *Aladdin* (Omar u/s), *Mary Poppins*, *Flower Drum Song*. Regional: *The King and I* (Simon, Kralahome u/s), *9 to 5* (Dance Captain), *How to Succeed...*, *Waterfall*, *Cinderella*, *Pacific Overtures*, *Miss Saigon*. @kenwaykua

SEAN McMANUS (*Vacation Swing*) is thrilled to be back in the Netherworld. Broadway:

Beetlejuice. National Tour: *Cats*. Regional: *The Sound of Music* (Paper Mill), *Newsies* and *West Side Story* (The Lex). Love and enormous gratitude to family, friends, The Collective and Telsey Office. TikTok/Insta: @seany_mac @smcmanus3

MATEO MELENDEZ (*Ensemble*). *Beetlejuice The Musical* (Ensemble), National Theatre, Winter Garden, Marquis Theatre; *iLuminate's Artist of Light* (Lt. Bob/Bboy), Malaysia, Hong Kong, US Tour: *Newsies* (Ensemble), *Something Rotten* (Ensemble), Fulton Theatre, MSMT; *Newsies* (Ensemble), Broadway Sacramento. Much love to my family and friends!

LEE N PRICE (*Ensemble, u/s Beetlejuice, u/s Otho*) is ecstatic to be making his national tour debut! Lee is a recent graduate of Baldwin Wallace University's Music Theatre program. Endless love and gratitude to his family and friends, Jed and the KMR team, Telsey Office, and the *Beetlejuice* team. IG: @leeprice25

LARKIN REILLY (*Ensemble, u/s Lydia, u/s Girl Scout, u/s Miss Argentina*). Broadway: *Bad Cinderella* (OBC). Regional: *The Rocky Horror Show* (Bucks County Playhouse), *The Nutty Professor*, *Spamalot* (Ogunquit Playhouse), *Chicago*, *Grease* (MTW). Big thanks to everyone at DGRW, Telsey, and hugs and kisses to her friends and family!! @larkin_reilly

LEXIE DORSETT SHARP (*Swing, u/s Barbara, u/s Delia, u/s Maxine Dean, u/s Juno, u/s Miss Argentina*). National/International Tour: *School of Rock* (Rosalie), *Young Frankenstein* (Elizabeth), *Elf* (Emily), *The Addams Family* (u/s Morticia/ Alice/ Grandma). CCM graduate. Thanks ATB Talent, Amy Murphy Studio, Telsey Office, her friends and family. Big love to Jesse! LexieDSharp.com @lexiedorsetsharp

CORBEN WILLIAMS (*Ensemble*). *The Little Mermaid* (Dir/Choreo), *Smokey Joe's Cafe* (Asst. Dir.), *No Strings* (Asst. Choreo/Dance Supervisor) *Cinderella* (Ens), *The Music Man* (Ens), *Sister Act* (TJ), *Frozen 'DCL'* (Grand Pabbie), *Golden Mickey's* (Simba).

EDDIE PERFECT (*Music & Lyrics*) is an Australian composer, lyricist, playwright, musician, and performer. He was recently nominated for a Tony for Best Original Score for his work in *Beetlejuice*. His works for the stage include *Shane Warne the Musical* (Token Events), for which he won a Helpmann, a Green Room, and Victorian Premier's Literary Award; *Vivid White and The Beast* (Melbourne Theatre Company); *Strictly Ballroom* (Global Creatures); *Songs From the Middle* (with the Brodsky Quartet); and *King Kong* on Broadway (Global Creatures). Eddie's acting credits include *Offspring* (Ten), *South Pacific* (Opera Australia/Lincoln Center Theater), *Keating!* (Belvoir), and as a regular presenter on *Playschool*. He is currently playing Franklin Hart Jr. in the Australian production of *9 to 5*. Eddie

WHO'S WHO IN THE COMPANY

dedicates *Beetlejuice* to his wife, Lucy Cochran, and her long lost mother, Mary.

SCOTT BROWN (*Book*) has made theatre things with Anthony King since high school; decades later, their two-man musical comedy *Gutenberg! The Musical!* (dir. Alex Timbers) scored Drama Desk, Lortel and Outer Critics Circle nominations. Scott also writes TV (HBO's "Sharp Objects", Hulu's "Castle Rock," WGN's "Manhattan," and novels (*xL, Knopf*). He won the George Jean Nathan Award for his theatre criticism at New York and spent many happy years at Entertainment Weekly. Infinite love to Robbie, Roger, Holland, and Robert, who made everything possible, and to Katie, Zoe and Harry, who make everything worth it.

ANTHONY KING (*Book*) is an Emmy-nominated writer, producer, and performer who received a Tony nomination for his work on *Beetlejuice*. Off-Broadway: *Gutenberg! The Musical!* with Scott Brown (Lortel, OCC and Drama Desk nominations). TV: "The Afterparty" (Apple TV+), "Silicon Valley" (HBO), "Broad City" (Comedy Central), "Search Party" (HBOMax), "Woke" (Hulu), "Robbie" (Paramount+) and more. He also spent many years as the artistic director of the Upright Citizens Brigade Theatre in NYC. All the love in the world to his wife, Kate, and their daughters Eleanor and Lydia.

ALEX TIMBERS (*Director*) is the recipient of Tony, Golden Globe, Drama Desk, Outer Critics Circle and London Evening Standard awards, as well as two Obie and Lortel awards. Broadway: *Beetlejuice*; *Moulin Rouge!*; David Byrne's *American Utopia*; *Oh, Hello* with Nick Kroll and John Mulaney; *The Pee-wee Herman Show*; Disney's *Peter and the Starcatcher*; *Bloody Bloody Andrew Jackson* (also book writer). TV: "John Mulaney: Kid Gorgeous at Radio City" (Netflix), "Mozart in the Jungle" (Amazon). His debut picture book, *Broadway Bird*, set in an all-animal version of Broadway, was recently published by Macmillan. @alextimbers

CONNOR GALLAGHER (*Choreographer*). Broadway: *Beetlejuice*. Other: *The Robber Bridegroom* (Roundabout, Astaire Award); *Beauty and the Beast* (Disney Dream, Brass Ring Award); *Found* (Philadelphia Theatre Company); *Elf the Musical* (Kennedy Center); *The Twelve* (Denver Center); *Tangled* (Disney Magic, world premiere); and productions at The Public Theater, Shakespeare Theatre Company, A.C.T., Two River, Westport Country Playhouse, Goodspeed, TheatreWorks and Northern Stage. Connor is a graduate of CCM, where in 2021 he received the Young Alumni Award. Spent a year on Broadway as a dancing rug. www.connorgallagher.com, @connorga

KRIS KUKUL (*Music Supervision, Orchestrations & Incidental Music*). Recent work:

Sing Street (Huntington), *In the Green* (Lincoln Center Theater), *David Byrne's Joan of Arc* (The Public Theater), *Head Over Heels* (Pasadena Playhouse), *Runaways* (City Center), Jeff Buckley's *The Last Goodbye* (The Old Globe), *The Heart of Robin Hood* (Royal Alexandria Toronto), *Songbird* (59E59), *Liz Swados Project* (Ghostlight Records). Williamstown Theatre Festival; resident music director 2005-2014. International work: Greek National Theatre, Epidaurus Festival, Edinburgh Fringe. Composer: *Camp Monster*, *Wing It!* (WTF), *Oliver Twist* (STNJ), *A Midsummer Night's Dream* (NTG). Adjunct faculty NYU/Tisch

DAVID KORINS (*Scenic Design*). Recent Broadway: *Hamilton* (Tony nom), *Beetlejuice* (Tony nom) *Dear Evan Hansen*, *Mrs. Doubtfire*. TV: 94th and 91st Academy Awards, "Grease: Live!" (Emmy Award), *The Big Brunch*, *Last Week Tonight*. Creative director: *Immersive Van Gogh*, *Disney animation immersive experience*, *Hamilton: The Exhibition*, David Blaine, Bruno Mars, Lady Gaga, Kanye West, Mariah Carey, Andrea Bocelli. Dad: Stella and Vivian. @davidkorins

WILLIAM IVEY LONG (*Costume Design*). *Beetlejuice* is Mr. Long's 75th Broadway show! In addition to his countless design credits for television, film, opera and ballet, Mr. Long has won six Tony Awards, with 18 nominations. He was inducted into the Theater Hall of Fame in January 2006. williamiveylong.com

KENNETH POSNER (*Lighting Design*) designs extensively Off-Broadway, for resident theatres and for touring productions throughout the United States and internationally. His Tony nominated designs include *The Adventures of Tom Sawyer*, *Coast of Utopia* (Shipwreck), *Beetlejuice*, *Hairspray*, *Dirty Rotten Scoundrels*, *Pippin*, *Kinky Boots*, *Cinderella*, *Wicked*, *Other Desert Cities*, and *The Merchant of Venice*. He has received Tony, Drama Desk, Outer Critics' Circle and Obie awards.

PETER HYLENSKI (*Sound Design*). Tony Award winner, Grammy and Olivier nominated. Selected designs: *Moulin Rouge!*, *Frozen*, *Anastasia*, *Beetlejuice*, *Once on This Island*, *Something Rotten!*, *King Kong*, *Rock of Ages*, *After Midnight*, *Motown*, *The Scottsboro Boys*, *Side Show*, *Rocky*, *Bullets Over Broadway*, *Shrek the Musical*, *On a Clear Day*, *Lend Me a Tenor*, *Elf*. Other: *Le Rêve* and *Lake of Dreams* at Wynn Las Vegas.

PETER NIGRINI (*Projection Design*). Broadway (selected): *MJ: The Musical*; *Ain't Too Proud*; *SpongeBob SquarePants: The Broadway Musical*; *Dear Evan Hansen*; *A Doll's House, Part 2*; *Am lie*; *An Act of God*; *Fela!* Elsewhere: *Man in the Ring* (Huntington Theatre); *Grounded* and *Here Lies Love* (The Public Theater); *Real*

WHO'S WHO IN THE COMPANY

Enemias (BAM); Grace Jones' *Hurricane* tour; *Lucia di Lammermoor* (Santa Fe Opera); *Deep Blue Sea* (Bill T. Jones/Arnie Zane Dance).

MICHAEL CURRY (*Puppet Design*) is the founder of Michael Curry Design, a world leader in character and concept design. Michael's designs for Cirque du Soleil, Metropolitan Opera, Disney Theatrical (*The Lion King*, *Frozen*) and Olympics opening ceremonies have gathered multiple awards. Michael works with his long-term team in Portland, Oregon, continuing innovations in visual effects and puppetry.

JEREMY CHERNICK (*Special Effects Design*) has worked on 50-plus Broadway productions: *MacBeth*, *Search for Signs...*, *Clyde's*, *Hadestown*, *Oklahoma!* Jeremy worked with Disney Theatrical Group creating effects for *Beauty and the Beast*, *Frozen*, *Aladdin*, *Hunchback...* and *Tarzan*. West End: *Harry Potter and the Cursed Child*, *Let the Right One In*. Emmy Award honoree for work on NBC's *Jesus Christ Superstar Live!* (2018). Jeremy serves as head designer for J&M Special Effects in Brooklyn. jmf.net

MICHAEL WEBER (*Magic & Illusion Design*). Weber's magic has appeared in Broadway productions including *Angels in America*, *The Year of Magical Thinking*, *Faustus*, *In and of Itself*, *On the Stem*, *Ricky Jay and His 52 Assistants*, *Rogue's Gallery* and *Topdog/Underdog*. Film: *Forrest Gump*, *Oceans 13*, *Serpent and the Rainbow*, *Sneakers*, *The Illusionist*, *The Parent Trap*, *The Prestige*, and *Wolf*.

CHARLES G. LAPOINTE (*Hair & Wig Design*). Broadway, touring, West End and international productions including *Hamilton* (Make-Up Artists & Hair Stylist Guild Award), *MJ*, *The Cher Show* (Drama Desk Award), *The Band's Visit*, *Beautiful: The Carole King Musical*, *Ain't Too Proud*, *Beetlejuice*, *SpongeBob SquarePants: The Broadway Musical* (Drama Desk Award), *Jersey Boys*, *Anastasia*. TV: "The Wiz" (Emmy Award nomination), "Jesus Christ Superstar Live!" (Emmy Award nomination/Make-Up Artists & Hair Stylist Guild Award).

JOE DULUDE II (*Make-up Design*). Broadway, Off-Broadway and West End: *Wicked*, *KPOP*, *Beetlejuice*, *MJ the Musical*, *SpongeBob SquarePants*; *The Broadway Musical*, *Anastasia*, *Sunday in the Park with George*, *Torch Song Trilogy*, *Beautiful: The Carole King Musical*, etc. Film: *Black Flame*, *Don't Look Up*, *Ghostbusters*. TV: "Jesus Christ Superstar Live!" (Emmy nomination), "Annie Live!" "Julia," "SpongeBob Live on Stage," "The Gilded Age," "Castle Rock." Joedulude2.com, [@dulude2](https://twitter.com/dulude2)

CATIE DAVIS (*Associate Director*). Broadway: *Beetlejuice*, *Moulin Rouge!*, *Company*. Other associate: *Ben Platt Live from Radio City Music Hall* (Netflix), The Public Theater, Roundabout. Catie directs and develops new contemporary

musical theatre. catie-davis.com @catie-davis

MICHAEL FATICA (*Associate Choreographer*) has served on the choreography teams for *Beetlejuice* (Broadway), *Matilda* (International Tour) and the Radio City New York *Spring Spectacular*. His own work can be seen on Celebrity and Norwegian Cruise Lines and in the immersive burlesque show *Speakeasy* in midtown Manhattan. Broadway veteran of 7 shows. @michaelfatica

LORENZO PISONI (*Physical Movement Coordinator*). Broadway: *Beetlejuice*, *Almost Famous*, *MJ*, *Gary*, *Frozen*, *Noises Off*. As an actor, Lorenzo's work on and off Broadway has been recognized with Drama Desk, Lucille Lortel, Obie and Outer Critics Circle awards. @lorenzopisoni

DAVID DABBON (*Dance Arrangements*). Emmy nomination: *Eat Sh*t*, *Bob!* (composer). Broadway: *Funny Girl* (additional dance arrangements), *Disaster!* (dance arranger). *HBO's Six by Sondheim* (arranger). Orchestrator: Audra McDonald's *Sing Happy*, *Go Back Home*. Graduate of the Hartt School and Carnegie Mellon University.

MATT STINE (*Music Producer*) is a Tony Award-winning orchestrator, two-time Grammy-nominated music producer and a Drama Desk, Lucille Little and Outer Critics Circle Award-nominated sound designer. Credits: *KPOP*, *Moulin Rouge!*, *Once Upon A One More Time*, *Assassins* (CSC), *Sweeney Todd* (Barrow Street), *Here Lies Love* (The Public Theater). 27sound.com

KRISTY NORTER (*Music Coordinator*) is a freelance musician and Music Coordinator. Her Coordinator credits include: *Some Like It Hot*, *SIX*, *New York New York*, *Back to the Future*, *SIX* National Tours, *Merrily We Roll Along*, *Mr. Saturday Night*, *Cyrano*, *Black No More*, *The Harder They Come*, and *SUFFS*.

MIDIOMATIC, LLC (*Keyboard Programmer*) features electronic music design from Taylor Williams, Dana Haynes, and Ethan Deppe. Credits include *King Kong*, *Be More Chill*, *Frozen*, *Moulin Rouge!*, *The Prince of Egypt*, *Lempicka*, *Griswold's Broadway Vacation*, *Trading Places*. midiomatic.com

ANDY GROBENGIESER (*Music Director/Conductor*). Thanks to Eddie, Kris, Howie, and Alex for this one. Broadway: *Aladdin*, *King Kong*, *Groundhog Day*, *Ghost*, *The Little Mermaid*, *Lestat*. National Tour: *Peter and the Starcatcher*, *Shrek The Musical*, *The Lion King*. B.M., Millikin University; M.M., UT-Austin. More at grobemix.com.

ALLIED GLOBAL MARKETING (*Tour Marketing & Press*) is an integrated marketing agency working with the world's largest

WHO'S WHO IN THE COMPANY

entertainment, sports, consumer, and lifestyle brands, including 80+ Broadway shows over 25 years. Current tours: *Ain't Too Proud, The Book of Mormon, Funny Girl, Hadestown, The Kite Runner, Mamma Mia!, Mean Girls, Mrs. Doubtfire, Pretty Woman, Wheel of Fortune LIVE!* Upcoming tours: *Back to the Future, Elf, The Hip Hop Nutcracker, Some Like It Hot.*

THE TELSEY OFFICE (*Casting*). With offices in both New York and Los Angeles, The Telsey Office casts for theater, film, television, and commercials. The Telsey Office is dedicated to creating safe, equitable, and anti-racist spaces through collaboration, artistry, heart, accountability, and advocacy.

JOEL T. HERBST (*Company Manager*). Go Goslings!

HILLARY SMITH (*Assistant Company Manager*) couldn't be happier traveling the country with *Beetlejuice the Musical*. Most recently she has spent time as the After School Program Director at Applause NY and the Director of Education at The Broadway Collective. Love to Ryan, Mom and Dad, and thanks to Joel!

ALAND KNIGHT (*Production Stage Manager*). National Tour: *Jesus Christ Superstar, Charlie and the Chocolate Factory, Les Misérables, The Sound of Music, Mamma Mia!, The Book of Mormon, Sister Act the Musical*. Lots of love to his family back in Michigan!

STEPHANIE HALBEDEL (*Stage Manager*). National Tour: *Jesus Christ Superstar, Miss Saigon, Les Misérables, The Phantom of the Opera, Dirty Dancing, Blue Man Group*. For my all-things-spooky sister Sarah.

LESLIE S. ALLEN (*Assistant Stage Manager*). National Tour: *Pretty Woman...* (1st National); *Barney: Let's Go Live!*; Kelly Clarkson's *Addicted*; George Strait, 2007. Regional: Philadelphia Theatre Company, Dallas Theater Center, Walnut Street Theatre, Dallas Children's Theater. Dedicated to my mentor Claude File. Thank you to family and friends for love and support.

GENTRY & ASSOCIATES (*General Management*) has managed nearly 250 national and international touring theatrical productions over the past 25 years. Current and upcoming productions include *A Beautiful Noise, Beetlejuice, The Book of Mormon, Come From Away, Elf the Musical, Funny Girl, Les Misérables, Life of Pi, Mean Girls, Peter Pan*, and *To Kill a Mockingbird*.

JENNY GERSTEN (*Line Producer*) loves to produce. Producer of musical theatre at New York City Center, interim artistic director at the Williamstown Theatre Festival, at sea she's the creative producer for Virgin Voyages. Other producing projects include *The Outsiders* (with American Zoetrope) and *Born for This*. Boards:

Ballet Tech, The Debate Society, The Mercury Store.

MARK KAUFMAN (*Executive Producer*). As executive vice president, Warner Bros. Theatre Ventures, Kaufman produced the West End, Broadway, first national tour and Australian production of the Olivier Award-winning musical *Charlie and the Chocolate Factory* and the Broadway stage adaptation of Stephen King's *Misery* starring Bruce Willis and Laurie Metcalf, as well as the Tony Award-winning *The Curious Incident of the Dog in the Night-Time*. Recent and upcoming projects include *Dave* (Arena Stage), *17 Again* (NAMT), *Dog Day Afternoon* and *A Star Is Born*. Before joining WBThV, Kaufman oversaw the Broadway productions of *Hairspray*, *The Wedding Singer* and *Elf* for New Line Cinema. Kaufman executive produced the New Line films *Secondhand Lions, Hairspray, Four Christmases, 17 Again* and *My Sister's Keeper* and co-produced *Valentine's Day*. Kaufman wrote *Toothless* for ABC's *Wonderful World of Disney* and *Just a Walk in the Park* for ABC Family. Love to Stacey, Ethan, Spencer and Victoria.

LANGLEY PARK PICTURES (*Executive Producer*). Kevin McCormick serves as executive vice president production at Warner Bros. Pictures. (Formerly president of production, leaving in 2010 to start Langle Park Pictures). Kevin oversees many films, including *Dune 2, Furiosa, The Wise Guys, and The Back Nine* for HBOMax. Kevin is also an executive producer on the Broadway hit shows *Beetlejuice* and *Charlie and the Chocolate Factory* and remains a senior advisor to Warner Bros. Theatre Ventures division.

MIMI INTAGLIATA (*Executive Producer*) (she/her) has spent 30+ years working in theatrical production as a Stage Manager, Production Manager, and Producer. Credits: Director of Production Operations, Disney Theatrical Group - *Beauty and the Beast* (Shanghai Disneyland Resort), *Frozen* (Broadway), *Newsies the Musical* (national tour, theatrical film), *The Lion King* (Rafiki tour), developmental productions of *The Hunchback of Notre Dame* and *Shakespeare in Love*. Director of Production, Paper Mill Playhouse - over 40 productions including the World Premiere of *Newsies the Musical*, the North American premiere of the 25th Anniversary tour of *Les Misérables* (in partnership with NETworks). Production Manager, *The Dodgers - 42nd Street* (Broadway/Tour), *Urinetown* (Broadway/Tour), and *Bare: A Pop Opera* (original off-Broadway), among others. She and her wife, Alicia Duran, are proud parents of their two children, Celeste and Lucas.

WARNER BROS. THEATRE VENTURES (*Producer*) is thrilled to be returning to Broadway with *Beetlejuice*. Theatre Ventures develops and produces first-class musicals and stage productions from the company's expansive catalogue. WBThV

was previously represented on the West End, Broadway, Australia and currently on the national tour by Olivier Award-winning musical *Charlie and the Chocolate Factory*, the Broadway stage adaptation of Stephen King's *Misery* starring Bruce Willis and Laurie Metcalf and by the Tony Award Best Play winner *The Curious Incident of the Dog in the Night-Time*. Other Broadway credits include Tony Award-winning musical *The Bridges of Madison County*, and the holiday hit *Elf*. The division is developing productions of *Dave* (Arena Stage), *17 Again* (NAMT), *Dog Day Afternoon* and *A Star Is Born*. Additionally, we oversee and serve as creative consultants on the licensing of third-party stage rights to various properties held within the Studio's vast media library such as the upcoming *Broadway Vacation* and *Mr. Saturday Night*.

NETWORKS PRESENTATIONS (*Producer*) is an industry-leading producer of touring theatrical productions, committed to delivering quality entertainment to audiences worldwide for more than 25 years. Current and upcoming productions include *A Beautiful Noise*, *Beetlejuice*, *The Book of Mormon*, *Come From Away*, *Elf the Musical*, *Funny Girl*, *Les Misérables*, *Life of Pi*, *Mean Girls*, *Peter Pan* and *To Kill a Mockingbird*. networkstours.com

JEFFREY RICHARDS (*Producer*) is delighted to continue his association with *Beetlejuice* and is happy to collaborate again with Orin Wolf and NETWORKS Presentations, who have been the producing partners on the acclaimed National Tour of *Fiddler on the Roof*. Broadway producing musical credits include: *Spring Awakening* (Tony Award winner-Best Musical), *Hair* (Tony Award winner-Best Musical Revival), *The Gershwins Porgy and Bess* (Tony Award winner-Best Musical Revival), and *The Bridges of Madison County*. Upcoming: *Maybe Happy Ending* – “the futuristic musical that the theatre has been waiting for” (Broadway's Best Shows).

STEVE TRAXLER (*Co-Producer*) co-founded and served as CEO/President of Jam Theatricals for 25 years, selling the company at the end of 2019. During that time, he produced over 60 shows on Broadway earning 13 Tony Awards, multiple national tours, and several West End productions—as well as overseeing the revitalization of the National Theatre in Washington DC hosting pre-Broadway productions of *If/Then*, *Mean Girls* and *Beetlejuice*.

REBECCA GOLD (*Producer*). Numerous awards on Broadway (*Porgy and Bess*, *All the Way*) and off (*Sleep No More*, *Sweeney Todd*). Committed to bringing provocative and innovative work to audiences, she is extensively supportive of not-for-profit theatre.

JAMES L. NEDERLANDER (*Producer*). President of Nederlander Organization. Credits: *Mr. Saturday Night* starring Billy Crystal, *Tina—The Tina Turner Musical*, *The Lehman Trilogy*, *To Kill a Mockingbird*, *The Band's Visit*, *On Your*

Feet!, *My Fair Lady*, *The Elephant Man*, and many others.

WARNER CHAPPELL MUSIC (*Producer*) is the global music publishing company of Warner Music Group and home to legendary songwriters including *Eddie Perfect*. With worldwide offices, Warner Chappell provides deep expertise and innovative opportunities for its songwriters.

deROY FEDERMAN PRODUCTIONS/ 42ND. CLUB (*Producers*). Jamie deRoy: Ten Tony Awards, 150-plus Broadway and Off-Broadway shows. Wendy Federman: Thirteen Tony Awards, two Olivier Awards. 42nd.club: Principals include Phil Kenny and Diego Kolankowsky.

MARY LU ROFFE (*Producer*). Three-time Tony Award winner, has been producing on Broadway, London and national tours for 30 years. Love *Beetlejuice*. It's showtime!!!!

MARC BELL & JEFF HOLLANDER (*Producers*). Marc is a two-time Tony Award winner (*Jersey Boys* and *August: Osage County*). Jeff makes his Broadway producing debut with *Beetlejuice*.

THE JOHN GORE ORGANIZATION (*Producer*) family of companies includes Broadway Across America and Broadway.com, under the supervision of 15-time Tony-winning producer John Gore (chairman and CEO). BroadwayAcrossAmerica.com Broadway.com

RUTH & STEVE HENDEL (*Producers*). Broadway: *Fela!* Current tours: *Mean Girls*, *The Band's Visit*, *Ain't Too Proud*. Upcoming: *A Walk on the Moon*, *Macbeth*. *Stephen* (films): *Finding Fela!*, *Neptune Frost*.

GABRIELLE PALITZ (*Producer*). Nineteen critically acclaimed shows including *Ain't Too Proud*, *All the Way* (Tony), *Bandstand*, *The Prom*, *Thoughts of a Colored Man*, *American Son*, *Lady Day*.... Proud Second Stage trustee.

PIERCE FRIEDMAN PRODUCTIONS (*Producer*). Tommy Pierce and Harry Friedman have been involved in entertainment since the late 60s. This wonderful, irreverent production is a perfect continuation of their adventure.

OPENING NIGHT DECEMBER 7, 2022

STAFF FOR
BEETLEJUICE

EXECUTIVE PRODUCERS

Mark Kaufman Kevin McCormick
Mimi Intagliata

GENERAL MANAGEMENT

GENTRY & ASSOCIATES
Gregory Vander Ploeg
Madeline McCluskey Steven Varon-Moore
Heather Moss

PRODUCTION MANAGEMENT

NETWORKS PRESENTATIONS
Jason Juenker
Hector Guivas Walker White Alex Williams pesci

TOUR MARKETING AND PRESS
ALLIED GLOBAL MARKETING

Andrew Damer
Jennifer Gallagher Scott Praefke
Jessica Cary Davis Adina Hsu Amenkha Sembenu
Jessica Steans-Gail Emily Toppen Anne Waisanen

CASTING

THE TELSEY OFFICE
Rachel Hoffman, CSA
Rashad Naylor
Priya Ghosh Domonique Aviles

EXCLUSIVE TOUR DIRECTION
THE ROAD COMPANY
Stephen Lindsay Brett Sirota
trc.nyc

Production Stage Manager Alan D. Knight
Stage Manager Stephanie Halbedel
Assistant Stage Manager Leslie S. Allen
Company Manager Joel T. Herbst
Assistant Company Manager Hillary Smith
Production Supervisor Stage Managers Rachel Bauder,
Matt Bur
Assistant Director Hunter Bird
Assistant Choreographer Nancy Renee Braun
Associate Scenic Design Rod Lemmond
Assistant Scenic Design Justin West
Associate Costume Design Paul Spadone
Assistant Costume Design Savannah Wetzel
Costume Assistant Dorothy Johnston
William Ivey Long Studio Director Donald Sanders
Costume Coordinator Kaitlyn Fae Barrett
Associate Hair and Wigs Nicholas Parrish
Assistant Make-up Tishonna Ferguson
Associate Lighting Design Joel Shier
Assistant Lighting Design Samuel J. Biondillo
Moving Light Programmer David Arch
Associate Sound Design Justin Stasiw
Associate Special Effects Design Megan Lang
Associate Projection Design Kate Ducey
Projection Animator Lacey Erb
Projection Programmer Daniel Scully
Head Carpenter Ashton Hill
Assistant Carpenter Ryan Coon
Flyman Dan Laushman
Head Electrician Tyler Lindsay
Assistant Electricians Price Foster, Jeremy Phelps
Head Audio Cory Raynor
Assistant Audio Madox Herwig
Head Props Jack Covitz
Assistant Props Brooke Downing
Head Wardrobe Kaitlyn Barrett
Assistant Wardrobe Emily Staloch
Hair and Makeup Supervisor Sarah Zahn
Assistant Hair & Make-up Deserea Parrish
Crew Swing Cara Stone
Production Electricians Olivia R. Doniphan, Justin Petito
Production Sound Heather Augustine, Mason Wisecup
Production Video Chelsea Zalikowski
Production Properties Dan Brown
Keyboard and Synthesizer Programmer
Midomatic, LLC/Taylor Williams/Dana Haynes/Ethan Deppe
Touring Physical Therapist Claire Rhode
Physical Therapy NEURO TOUR Physical Therapy, Inc.
Production Assistants Carson Gantt,
Rodrigo Esquivel Herrera, Emily Huber, Westin Hicks
Safety Consultant Bryan Huneycutt
Production Photography MurphyMade

Video Services HMS Media
Creative Services SpotCo
Website Services/Design SpotCo
Merchandise The Araca Group
Merchandise Manager Jessica Johnson, Brian Gray
Accounting NETWORKS Presentations LLC
Legal Services F. Richard Pappas, Esq.
HR Services Global Solutions, Inc.,
K+K Reset, LLC
Housing Road Rebel
Travel Agency Janice Kessler,
Carlson Wagonlit Travel
Trucking Clark Transfer

FOR NETWORKS PRESENTATIONS

Chief Executive Officer Orin Wolf
President/Chief Production Officer Seth Wenig
Chief Financial Officer/Chief Operating Officer Margaret Daniel
Business Affairs Scott W. Jackson
Executive Producers Mimi Intagliata, Trinity Wheeler
Associate Producer Hannah Rosenthal
Executive Assistant Isabella Schiavon
Sr. Director/Finance John Kinna
Vice President of Finance Scott Levine
Controller Jennifer Gifford
Director of Tour Accounting Laura S. Carey
Tax Director Pat Guerieri
Associate Tax Accountant Kim Ngan Tran
Sr. Director/Booking and Engagements Mary K. Witte
Director, Booking and Engagements Colin Byrne
Engagement Manager Stacey Burns
Director of Sales Zach Stevenson
Director of Marketing Heather Hess
Sr. Director/General Management Gregory Vander Ploeg
General Managers .. Madeline McCluskey, Steven Varon-Moore
Associate General Manager Heather Moss
Sr. Director/Production Management Jason Juenker
Sr. Production Manager Hector Guivas
Production Managers Walker White, Alex Williams
Technical Director pesci
Director of Operations Pearce Landry-Wegener
Resource Director Kayla Rooplal
Operations Manager Catherine Logan Blonar
Office Assistant Lisa Loveless
Music Coordinator John Mezzio
Warehouse Manager Joseph Spratt
Warehouse Costume Manager Bobby Maglaughlin
Warehouse Costume Shop Assistant Grace Santamaria

MUSIC CREDITS

“Day-O (The Banana Boat Song)” Written by Irving Burgie and William Attaway. Published by BMG Gold Songs (ASCAP) obo Caribe Music (ASCAP) and Reservoir Media Music (ASCAP) Reservoir Media Management, Inc. Used by permission. All rights reserved.

“Jump in the Line” by Harry Belafonte, Ralph de Leon, Gabriel Oller and Steve Samuel. Published by Clara Music Publishing Corp. (ASCAP). Administered by Next Decade Entertainment, Inc. All rights reserved. Used by permission.

CREDITS

Scenery and scenic effects built, painted, and electrified by Great Lakes Scenic Studios. Show Control and Scenic Motion Control featuring STAGE COMMAND SYSTEMS® by PRG Scenic Technologies, a division of PRG Broadway L.L.C., New Windsor, New York. Lighting equipment and special lighting effects by PRG Lighting. Sound equipment by Masque Sound. Video by PRG Video. Puppets by Symbolic Arts, Jerard Studios, Castelli Models, BB Props, Landmark Creations, and Sam Barnett at Silicone Sound. Props by Bad

Monkey Props, Jerard Studio, R Ramos Upholstery, Tom Carroll Scenery, Barrington Brolly, Colonial Braided Rug, Dapper Cadaver, Austin Rodriguez, Rob McFadyen, Arin Pounov, Danielle Moyal, and M Picciuto. Costumes made by Jennifer Love Costumes; Euroco Costumes, Inc; Felsen Tailors; Giliberto Designs; Rachel Ralby; Panzai Boutique; David Dalrymple Studio. Millinery by Arnold S. Levine, Inc. Gloves by Wing & Weft Gloves. Custom fabric painting and printing by Jeff Fender Studio, Dyenamix Inc., Juliann E. Kroboth. Rehearsed at New 42 Studios, New York City.

MAKEUP PROVIDED BY MAC



SPECIAL THANKS TO

Devin Keudell and Michael Demniak, Bespoke Theatricals
The Carson Center, Paducah, KY,
Mary E. Katz, Executive Director

Insurance Broker Services
Maury Donnelly and Parr, Inc.
Robert B. Middleton, Sr and Meghan Coleman

Financial Services and banking arrangements by
Flagstar Bank N.A.

Online: BeetlejuiceBroadway.com
Facebook, Instagram, X, TikTok: [BeetlejuiceBway](https://www.facebook.com/BeetlejuiceBway)



The Actors and Stage Managers employed in this production are members of Actors' Equity Association, the union of professional actors and stage managers in the United States.



All stage work performed by employees represented by IATSE.



UNITED SCENIC ARTISTS represents the designers and scenic painters for the American Theatre.



The Musicians employed in this production are members of the American Federation of Musicians of the United States and Canada.



The Director and Choreographer are members of the Stage Directors and Choreographers Society, an independent national labor union.



The Press Agents, Company and House Managers employed in this production are represented by the Association of Theatrical Press Agents & Managers.



This production is produced by a member of The Broadway League in collaboration with our professional union-represented employees.



Dr. Broadway

Educating Theatregoers. Enhancing Theatregoing.

**HERE'S YOUR CHANCE TO
LEARN BEHIND-THE-SCENES
DETAILS ABOUT THE SHOWS YOU
SEE ON THE THEATRE STAGE!**

Dr. Broadway (Kristin Stultz Pressley) is a Musical Theatre Historian - and one of Broadway's biggest fans. A passionate and energetic presenter, Pressley has taught theatre at every level - from pre-school to university. She earned her graduate degrees from the University of Kentucky (*Master of Arts in Theatre*, 2005) and the University of Georgia (*Doctor of Philosophy in Theatre*, 2011) and subsequently taught Theatre courses at Presbyterian College (Clinton, SC) and Furman University (Greenville, SC).

Join us Saturday between the matinee and evening shows across the street at the East Tennessee History Center for the Dr. Broadway sessions. You do not need to have a ticket to the show to attend an educational session, and all are free to the public.

SEE OUR WEBSITE OR SIGNAGE IN THE LOBBY FOR MORE INFO!

CONNECT WITH US

Want to stay in the loop with the Official State Theatre of Tennessee? Subscribe to our newsletter and receive advance notice on shows and presale codes for tickets!



**SCAN THE
CODE HERE
TO SIGN UP
NOW!**

FOLLOW US ON SOCIAL MEDIA FOR EVEN
MORE INFO ABOUT THE THEATRE

 @tntheatre  @TennesseeTheatre





More than just labels

THERMAL LABEL WAREHOUSE
IS PROUD TO BE A SUPPORTER
OF THE 2023-24 SEASON OF
BROADWAY AT THE TENNESSEE



A MODERN APPROACH TO GROOMING










a shane archer concept

*A World of Beauty
& Well-Being,
Award Winning Design*




*Stubble is a
homegrown brand
with unparalleled
expertise in men's
hair and grooming
services.*

Get social with us  

865-450-5490 | 5344 Kingston Pike
reservations@growknoxville.com

s p a r r o w

WINE BAR



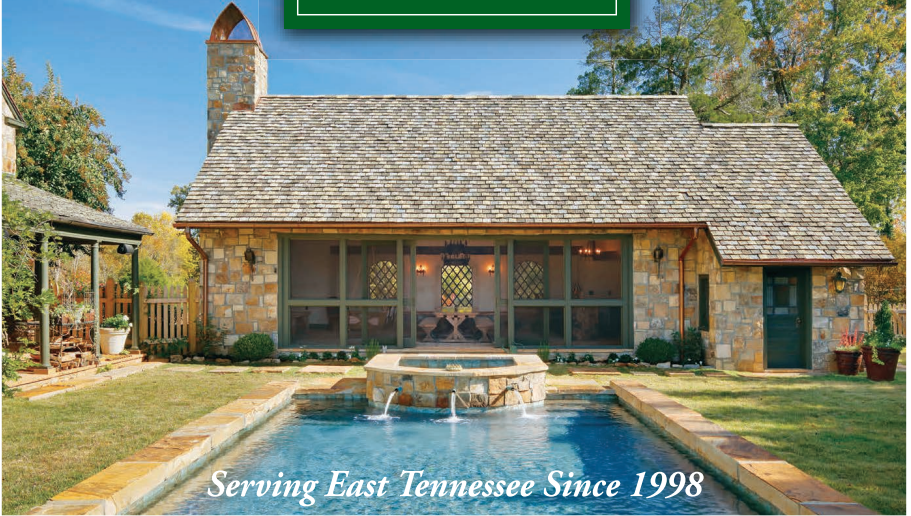
- Curated international wine list
- Wine and cheese flights
- Charcuterie, dessert and more

SparrowWineBar.com | Farragut, TN

fetconstruction.com

F.E. TRAINER
CONSTRUCTION, INC.
25TH ANNIVERSARY

865-522-2423



Serving East Tennessee Since 1998



Celebrating 15 Years!

*Authentic French Sweet & Savory Crepes
Breakfast • Lunch • Dinner
Famous French Brunch on Sat & Sun
Beer & Wine • Lavazza Coffee & Espresso
French Pastries & Macarons*

*Monday - Saturday open 8 am
Sunday open at 9 am.
Open Evenings Thursday - Saturday*

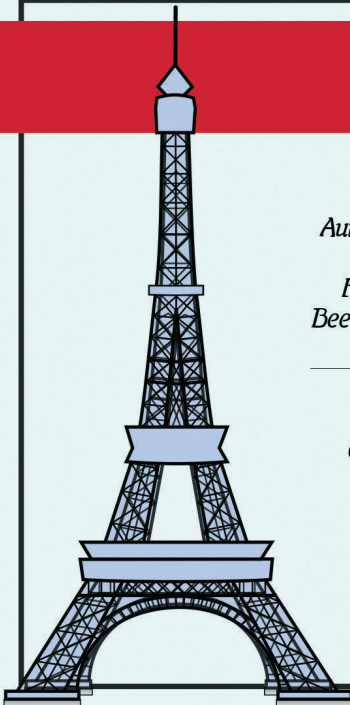
**Downtown • 412 Clinch Avenue
Knoxville, TN, 37902 • 865-540-4372
West Knoxville • 161 Brooklawn St.
Farragut, TN, 37934 • 865-288-7912**

see our full menu online

THEFRENCHMARKETKNOXVILLE.COM



SCAN ME



Grab a cocktail
or bite at

MAKER EXCHANGE

after the show!
710 CLINCH AVENUE

A new space to discover + celebrate
Knoxville makers and artists
on World's Fair Park

 Curated by Dogwood Arts



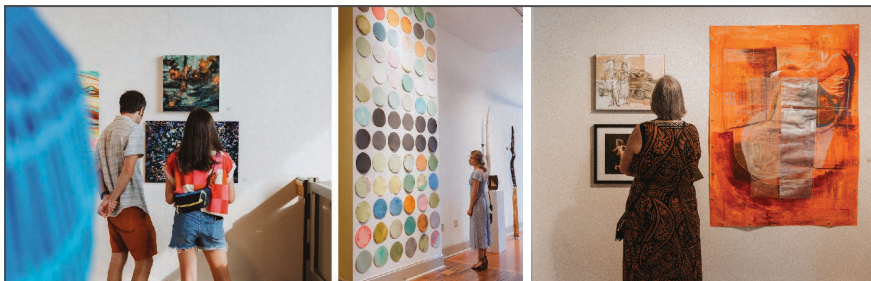
THE CURIO
a gallery, shop and
event space all in one

COFFEE SHOP
featuring Vienna Coffee

TAVERN
open for breakfast,
brunch, lunch + dinner

MAKEREXCHANGEKNOX.COM

[@MAKEREXCHANGEKNOX](https://www.instagram.com/MAKEREXCHANGEKNOX)



DOGWOOD REGIONAL EXHIBITION

AUGUST 2-30, 2024 | THE EMPORIUM CENTER | 100 S. GAY ST.

BRIT FLOYD



P · U · L · S · E
2024 WORLD TOUR

JULY 09

TENNESSEE
THEATRE
SINCE 1928



SATURDAY
JULY 13

TENNESSEE
THEATRE
SINCE 1928

BEN FOLDS
PAPER AIRPLANE
REQUEST TOUR
2024

JULY
18

TENNESSEE THEATRE

The Spice & Tea Exchange
Purveyors of Fine Spices, Herbs, Blends, Salts, Teas

Find Your Way to Flavor!®

SPICES · TEAS · BLENDS · GIFTS

1 FREE Small Tea
hot or iced from our tea bar*

*Only valid at this location. Must present coupon to redeem.

THE SPICE & TEA EXCHANGE® OF KNOXVILLE
522 S Gay Street | Knoxville, Tennessee | 865.985.0913 | knoxville@spiceandtea.com

Sweet Treats

MAST GENERAL STORE
— SINCE 1883 —
— 402 S. Gay Street • Downtown Knoxville —
(865) 546-1336 • MASTSTORE.COM •

THE EPISCOPAL SCHOOL OF KNOXVILLE

SERVING AGES 3 - 8TH GRADE

SETTING THE STAGE FOR SUCCESS

950 Episcopal School Way
Knoxville, TN 37932
(865) 777-9032
[@esksaints](#)

BROADWAY AT THE TENNESSEE THEATRE

PRESENTED BY
GREATER
KNOXVILLE
Honda Dealers

2024 - 2025 SEASON



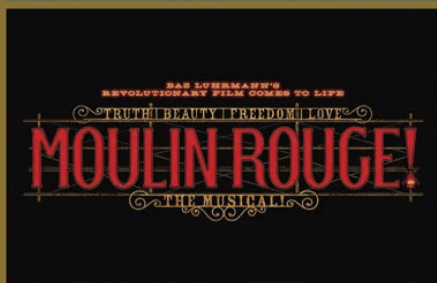
December 3-8
(8 performances)



December 31 - January 5
(8 performances)



February 11-16
(8 performances)



April 29 - May 11
(15 performances)



May 27 - June 1
(8 performances)



July 29 - August 3
(8 performances)

EAST TENNESSEE'S #1 NEWS SOURCE

10 NEWS

Local news you can trust.

STRAIGHT FROM THE HEART.

**WATCH WEEKDAYS AT
5PM | 6PM | 11PM**



TODD HOWELL

ROBIN WILHOIT

JOHN BECKER

Honda

2024 *Accord* HYBRID

2024 *CR-V* HYBRID



THE BEST SEATS ARE WAITING FOR YOU AT YOUR
Greater Knoxville Honda Dealer



HONDA

**Greater Knoxville
Honda Dealers**

GreaterKnoxvilleHondaDealers.com

Airport Honda
Alcoa

AutoNation Honda
West Knoxville
Knoxville

Honda Morristown
Morristown

Rusty Wallace Honda
Knoxville